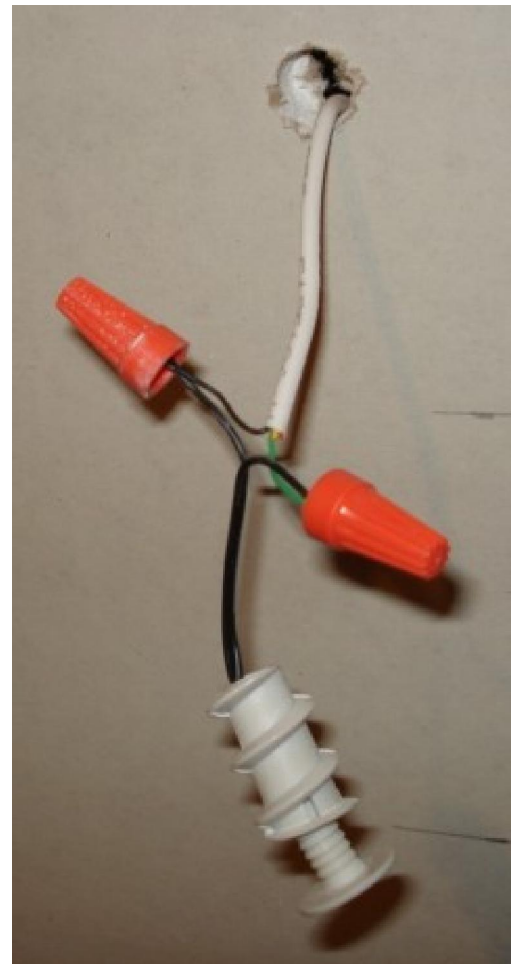


Installation Procedure for the Flush Mount sensor.

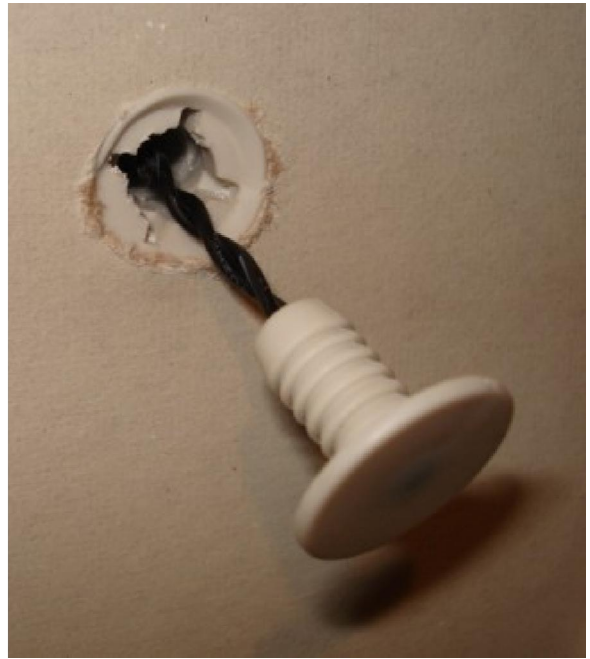
- 1) The 2 pieces of the sensor are shown in the picture to the right. The 2 pieces are:
 - a. The sensor body with the connected wire
 - b. The threaded outer case of the sensor



- 2) Drill a 1/2" hole into the Drywall where the sensor is to be located.
- 3) Fish the cable that will be connected to the sensor from behind the drywall and out through the 1/2" hole so that 6" – 12" of the cable is hanging through the hole.
- 4) Feed the Sensor wire through the center of the threaded outer case of the sensor & connect it to the cable that is hanging through the hole in the wall as shown in the picture to the right. à
- 5) Carefully feed the wires and wire-nuts through the 1/2" hole and into the wall. Use your hands to lightly start screwing the threaded outer case into the hole in the wall as shown below.



- 6) Use a large straight edged screw driver to screw the threaded outer case of the sensor the rest of the way into the ½” hole in the drywall. Be careful not to pinch the wire while you are screwing in the case. Screw the case into the wall until the front surface of the case is inserted just past the surface of the drywall. See below.



- 7) Use your thumb to carefully push the sensor body into the threaded outer case until the face of the sensor body is flat against the drywall.

