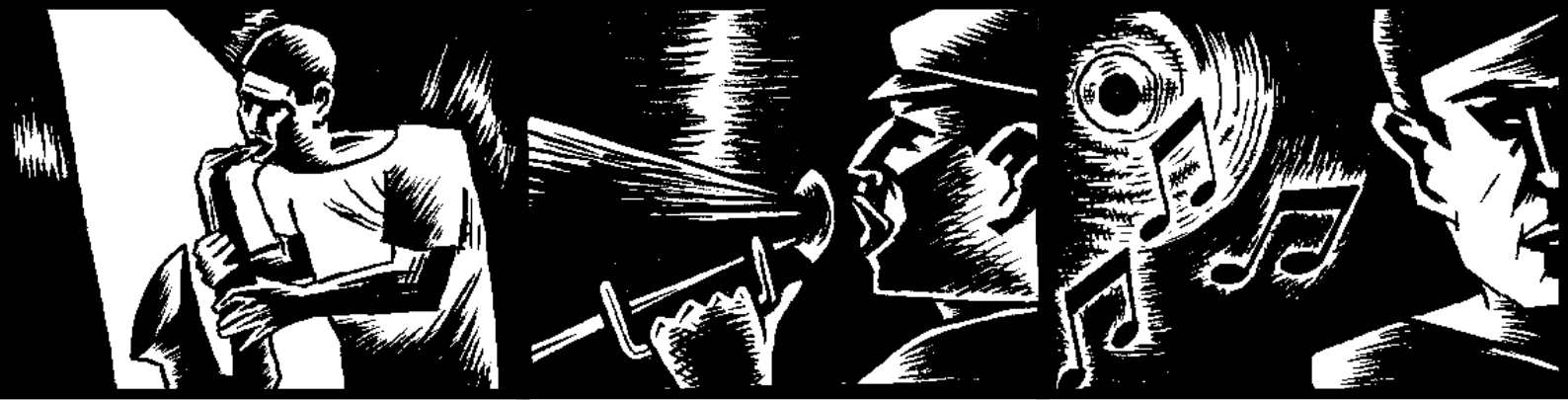


ANNUNCICOM



ANNUNCICOM 1000

Network intercom and PA
component for commercial,
industrial and security
applications



Quick Install Guide Version 1.0



Package content

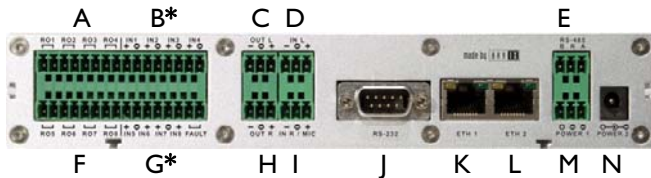
- a Annunicom 1000
- b Power supply
- c Serial cable
- d Screw block terminals (4 x 8 pin, 6 x 3 pin)
- e Label stickers for screw block terminals

Front view



- 1 Reset button (Press this button shortly to reset the device. If you press it until the red light flashes (about 5 seconds) the device will be reset to factory defaults.
- 2 Green and red LED for status display
- 3 Green LED (1...8) for I/O status display

Rear view



- A Relay outputs 1..4 (1/2:R01, 3/4:R02, 5/6:R03,7/8:R04)
- B Inputs 1..4 (1:IN1+,2:-, 3:IN2+, 4:-, 5:IN3+, 6:-, 7:IN4+, 8:-)
* WARNING: An input voltage on the "+" pin greater than 5 VDC can destroy the device!
The "-" pin is connected to the power supply "-" pin!
- C Left audio output (symmetric: cold:1, shield:2, hot:3)
Shield pin is connected to the power supply "-" pin!
- D Left audio input (symmetric: cold:1, shield:2, hot:3)
Shield pin is connected to the power supply "-" pin!
- E RS-485 bus (B:1, reference:2, A:3). The reference pin is connected via 100 Ohm to the power supply "-" pin!
- F Relay outputs 5...8 (R05:1/2, R06:3/4, R07:5/6, R08:7/8)
- G Inputs 5...8 & Fault Relay (1:IN1+, 2:-, 3:IN2+, 4:IN3+, 5:-, 6:IN4+, 7/8 Fault Relay [Normally Closed])
* WARNING: An input voltage on the "+" pin greater than 5 VDC can destroy the device!
The "-" pin is connected to the power supply "-" pin!
- H Right audio output (symmetric: cold:1, shield:2, hot:3)
Shield pin is connected to the power supply "-" pin!

Rear view (continued)

- I Right audio input or Microphone input (symmetric: cold:1, shield:2, hot:3 / Mic. power configurable)
Shield pin is connected to the power supply "-" pin!
- J RS-232 serial port (DSub9 male)
- K ETH1 RJ45 for LAN 10/100 Half/Full duplex
- L ETH2 RJ45 (NOT supported)
- M Power (1: +24..48 VDC, 2/3: power supply minus)
- E Power (center: +24..48 VDC, ring: power supply minus)

Installation

STEP 1

Plug a standard (straight) network cable (not included) into the network port (K) of the Annunicom 1000 and the other end into your hub or switch. You can also use a crossover network cable (not included) for a direct connection to your PC.

STEP 2

Connect at least the left output (C, &H for stereo) to the amplifier or mixer input(s) and adjust the volume for speaker(s) or a headphone. Get a pen and paper ready to write down the IP address that will be announced in step 4.

STEP 3

Plug the power supply (b) into the power jack (E) of the device and the other end into the power outlet of the wall.

STEP 4

The Annunicom 1000 will now search for a DHCP server to get an IP address and announce it over the audio outputs. *Example:192.168.0.12 (Voice: one nine two...)*
Make sure you write this IP address down.

Your Annunicom 1000 is now ready to start working. We recommend, however, that you set a Static IP address. See next pages on how to do this or download the user manual from www.barix.com.

Troubleshooting:

If no DHCP server is found then our IPzator function will search the network for a free IP address (this could take up to 5 minutes).

If the IP address is not announced check if the green LED (right LED on top of network port A) is lit. If it stays dark check your network cabling. If the front LEDs (3) stay dark check the power cabling (step 3).

If it still fails than revert the device to factory defaults by pressing the Reset button (1) for about 5 seconds while the Annunicom is powered and repeat the above steps.

Network configuration by web browser

STEP 1

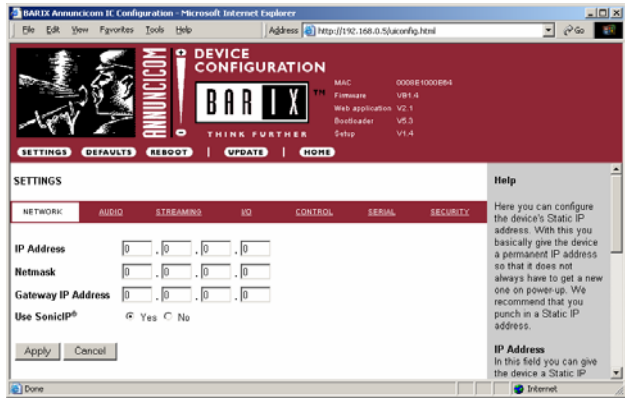
Open your web browser.

STEP 2

Enter the IP address of the Annunicom 1000 and press Enter. Example: 192.168.0.12

STEP 3

Click on the Configuration button.



STEP 4

Enter an IP address into the 4 IP address fields. At default it is 0.0.0.0 for automatic discovery. Ask your network admin before using the IP address announced by SonicIP.

STEP 5

In normal operating conditions leave the Netmask as is.

STEP 6

The Gateway, primary and alternative DNS IP addresses as well as Sonic IP can be left at default for now.

STEP 7

Hit the Apply button to save all changes. The Annunicom 1000 will reboot with a Static IP address. Please continue with section "Next steps" on last page.

Network configuration using supplied serial cable

STEP 1

Open a Terminal program.

STEP 2

Go to the settings menu of the terminal program and adjust the following settings:
Baud rate 9600 bit/sec, 8 Data Bits, no Parity, 1 Stop Bit

STEP 3

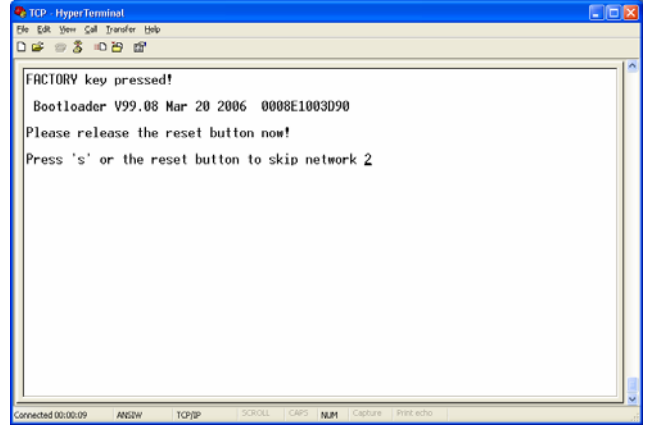
Unplug the power supply of the Annunicom 1000.

STEP 4

Connect the supplied serial cable to your PC's COM port and to the serial port of the Annunicom.

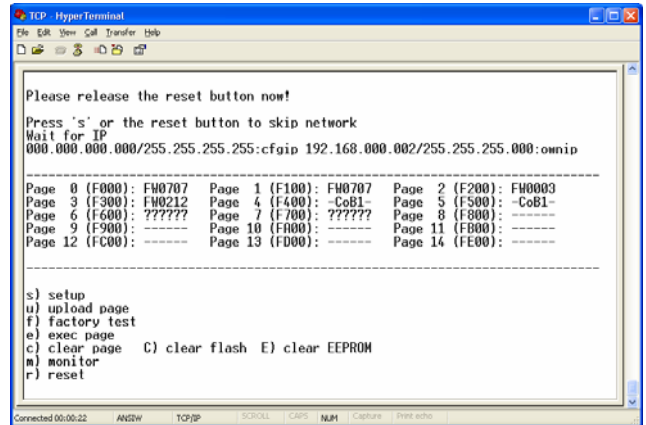
STEP 5

Keep the Reset button pushed and plug in the power supply. Release the Reset button as soon as you see the following screen:



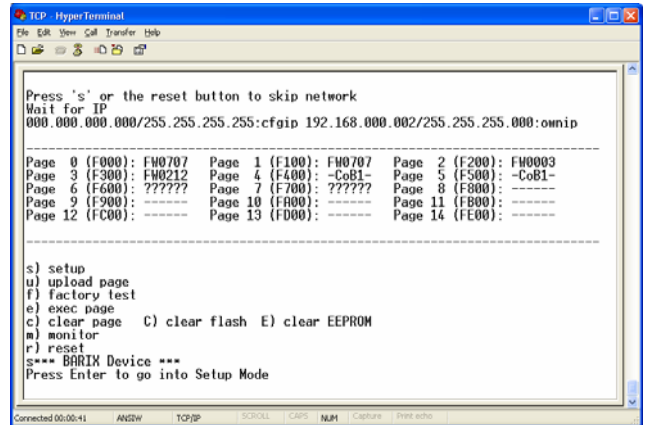
STEP 6

Hit <S> to skip network discovery if not connected to a network and the following screen appears:



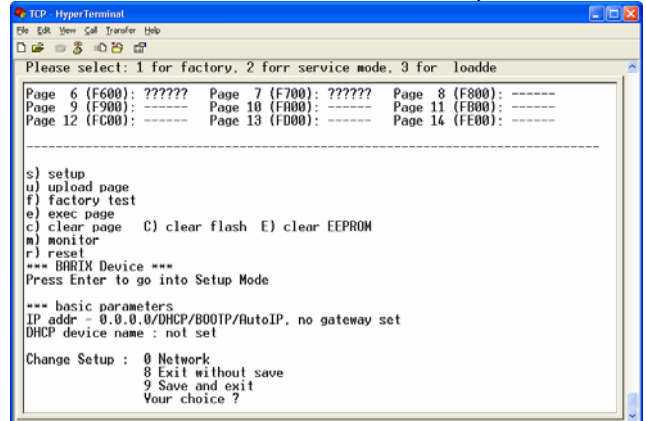
STEP 7

Hit <S> to get to the Annunicom setup.



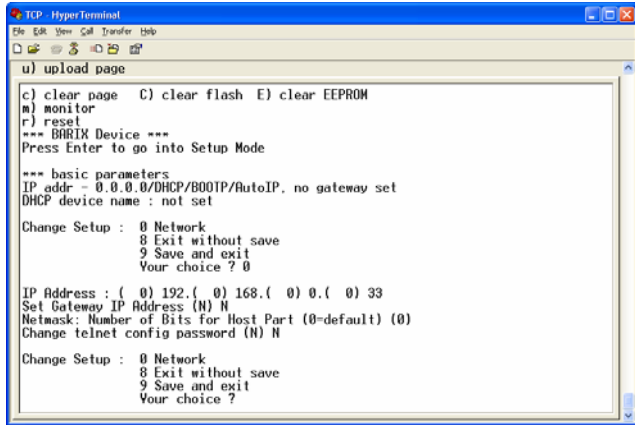
STEP 8

Hit <enter> to enter the Annunicom setup mode.



STEP 9

Type in <0> and hit <enter> to enter the Network configuration. Enter all requested values:



STEP 10

Type in <9> and hit <enter> to save the Network configuration.

Please continue with section “Next steps”.

Network configuration using telnet

STEP 1

Unplug the power supply of the Annunicom 1000.

STEP 2

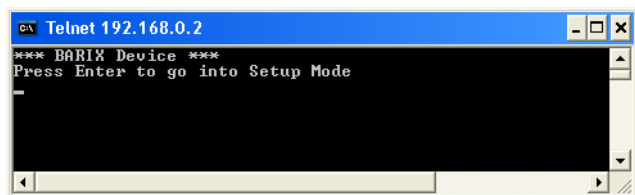
Keep the Reset button pushed and plug in the power supply. Release the Reset button after 5 seconds.

STEP 3

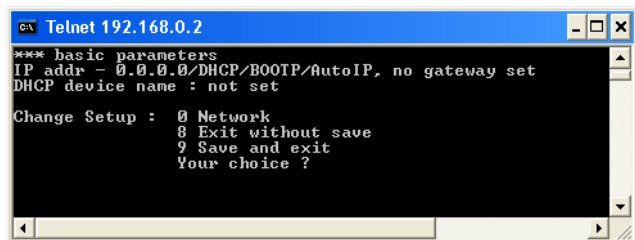
Run a command session. Type at the command prompt “telnet” followed () with the IP address announced by Sonic IP on port 9999.

Example: telnet 192.168.0.12 9999

You will see the following screen:



Hit <enter> to access the Exstreamer in the setup mode.



STEP 4

Type in <0> and hit <enter> to enter the Network configuration. Enter all requested values.

STEP 5

Type in <9> and hit <enter> to save the Network configuration.

Next steps

STEP 1

Download the user manual from www.barix.com.

STEP 2

Read the manual to configure the functionality of the Annunicom 1000.

STEP 3

Check the section “Updating the device”.

STEP 4

Check out the Barix user forum on www.barix.com for additional information.

Support

For support please contact your local dealer or visit www.barix.com.

© Barix AG 9/2007, all rights reserved.

All information is subject to change without notice.

All mentioned trademarks belong to their respective owners and are used for reference only.

Barix, Annunicom, SonicIP and IPzator are trademarks of Barix AG, Switzerland, and are registered in certain countries.

For information about our products, manuals, technical documentations and latest version of firmware please visit www.barix.com.

Barix AG

Seefeldstrasse 303

8008 Zürich

SWITZERLAND

www.barix.com