

# Audiologger

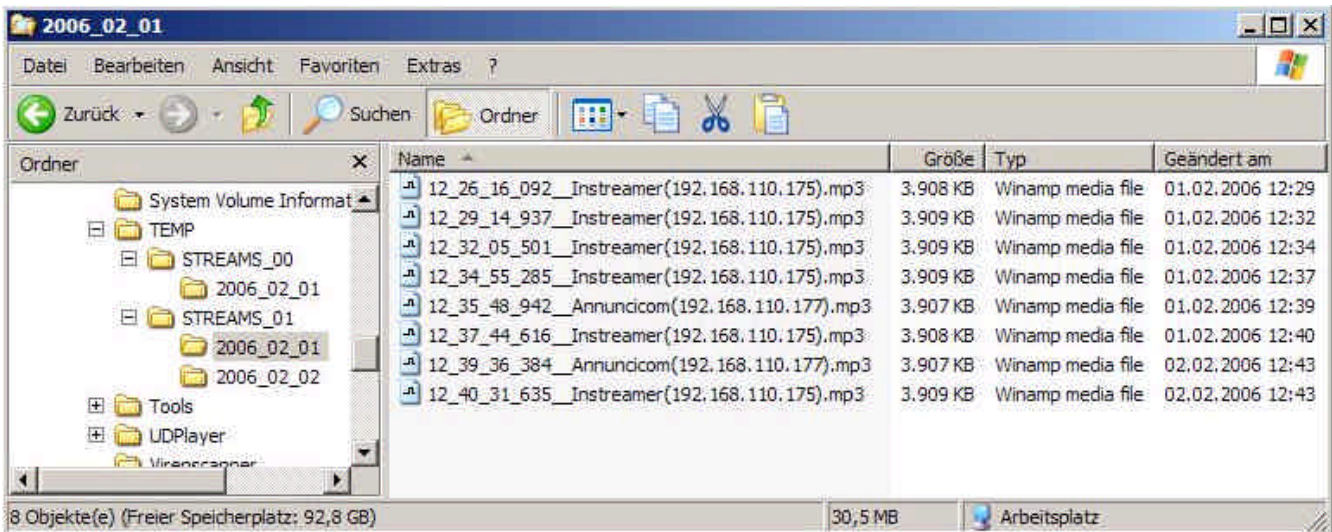


If you will record the Annunicom's or Instreamer's (or IPAM) MP3 stream then Audiologger is the right tool for you .

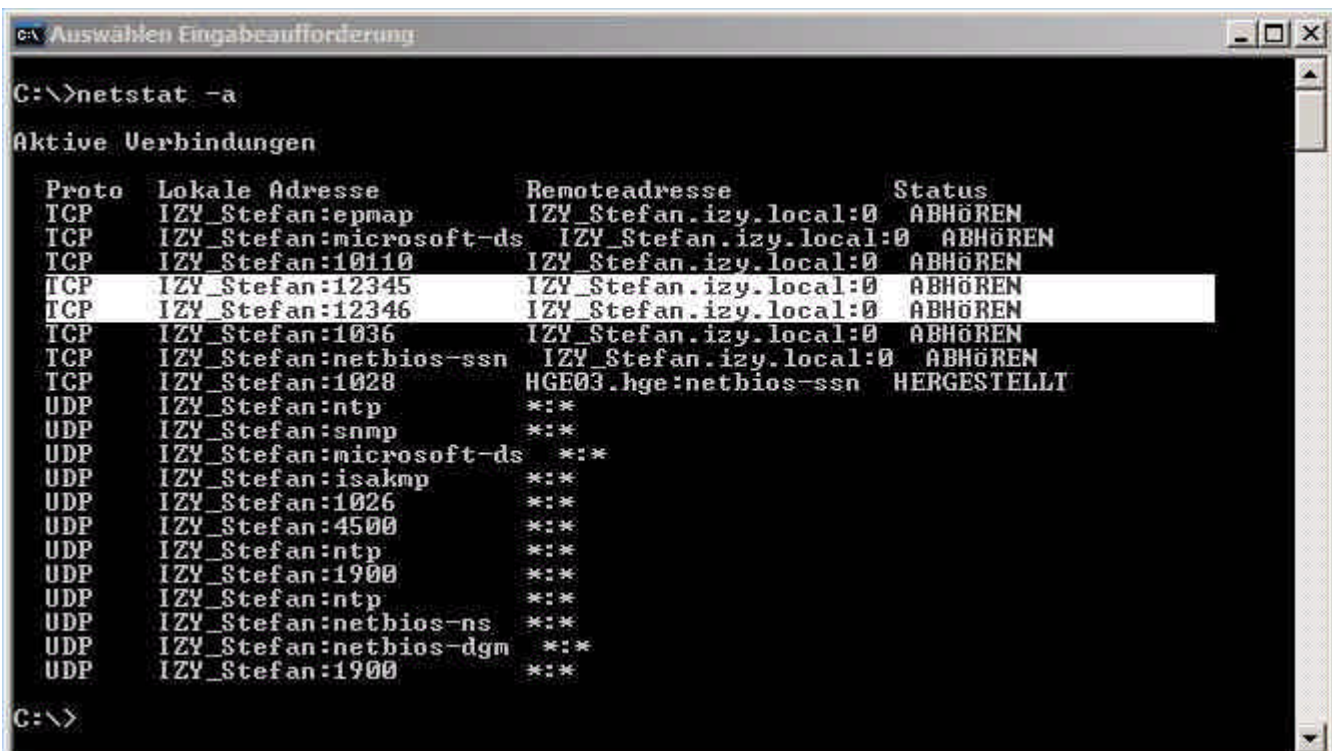
Audiologger was made from Lake of Soft Ltd. and can be download for free from [www.Barix.com](http://www.Barix.com) .

It can be started as service or as normal program. The advantage of Audiologger is that it saves the audio files automatically in a folder with the current date. The file names can contain timestamp and IP address. That makes archiving very easy . File type is MP3 .

Multiple streams from multiple Barix devices can be recorded on same port at the same time.



Audiologger will run in the background, there is no GUI , nothing. It opens only two TCP ports, where your Barix device can stream to . Default TCP ports are 12345 and 12346.



Install instructions you can find in the readme.txt which is contained in the Audiologger zip file .  
The Audiologger.ini file contains the configuration of Audiologger.

- There you can define :
- file length (in seconds)
  - file length (in bytes)
  - folder name to save the files
  - file name schema
  - update time for the Audiologger.ini
  - TCP port numbers
  - and some other parameters

The Instreamer settings for the use with Audiologger should look like:

BARIX Instreamer Configuration - Microsoft Internet Explorer

Adresse <http://192.168.110.175/uiconfig.html>

**INSTREAMER**

**DEVICE CONFIGURATION**

**BARIX**™

MAC: 0008E10015FB  
Firmware: VA2.01 (01/27/2006)  
Web application: VB1.11  
Bootloader: V99.06  
Setup: V01.05  
Song: V02.10  
XT: V00.02

SETTINGS | DEFAULTS | REBOOT | UPDATE | HOME

NETWORK | AUDIO | **STREAMING** | I/O | CONTROL | SERIAL | SECURITY

Own Name:

Streaming mode:

Trigger Level:  only for mode "send on Level"

Pre Trigger Start:  msec

Post Trigger Play:  msec

Buffer Underrun Mode (TCP):

Stream Packet Strategy:

UDP Tx Source Port:

Sync Port:

Radio Path:

Stream to

#	Conn. type	IP #	#	#	#	Port #
1	Raw TCP	192	.168	.110	.173	:12346

Lokales Intranet